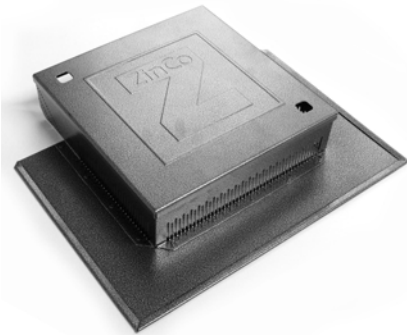


Product Data Sheet

Inspection Chamber AKS 8



EDP No. 4007



Inspection chamber specially designed for the use above water outlets or scuppers near parapets.



Technical Data

Inspection Chamber AKS 8

Made of galvanized and plastic-coated steel; with one side open and three sided flange, developed for water outlets near parapets or scuppers, can be used on fold-ups with insulation material fillet, perforated edges to install without tools. Detachable and walkable cover with two finger holes. If required, the interlocks can be installed into these holes.

Color:	old silver-antique	
Height:	ca. 3.1 in.	(ca. 80 mm)
Outer dimension of the Chamber	ca. 11.8 x 11.8 in.	(ca. 300 x 300 mm)
Flange:	ca. 15.4 x 18.5 in.	(ca. 390 x 470 mm)
Slots:	ca. 0.1 in.	(ca. 3 mm)
Weight:	ca. 6.4 lbs	(ca. 2.9 kg)

Accessories:

Extension Piece KSA 8

EDP No. 4008

Extension Piece KSA 20

EDP No. 4020

for elevation of AKS 8 in segments of 3.1 in. (80 mm) or 7.9 in. (200 mm).

Set of interlocks

EDP No. 9031

consisting of two interlocks, for easy installation into the finger holes and one square spanner.

Features

- suitable for the installation on fold-ups with and without fillets
- walkable
- elevation with additional extension pieces
- separately available: set of interlocks for easy installation into the finger holes

Installation Instructions

Install the Inspection Chamber AKS 8 on the drainage element. The open side point in the direction of the parapet

or scupper. Install the filter sheet on top of the flange of the inspection chamber.

Health and Safety

This product does not require a material safety data sheet (MSDS) according to the OSHA Hazard Communication Standard (29 CFR 1910.1200). When used as recommended or under ordinary

conditions, it should not present a health and safety hazard. However, an MSDS can be provided as a courtesy in response to a customer request.

