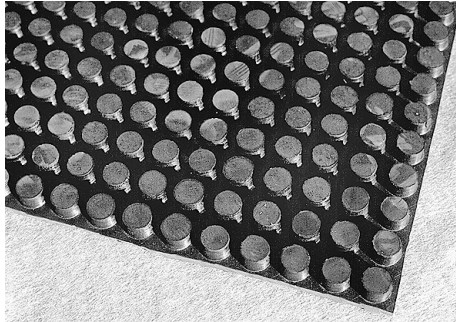


# Product Data Sheet

## Elastodrain® EL 202



Protection and drainage sheet with extremely high loadability; designed for use under driveways, access roads for fire brigades, parking areas, etc.

### Technical Data

EDP No. 3220

#### Elastodrain® EL 202

Compression molded building protection and drainage sheet of solid, recycled vulcanized rubber, with a rebated edge and one-sided stud structure.

Color:	black	
Height:	ca. 0.7 in.	(ca. 19 mm)
Stud height:	ca. 0.5 in.	(ca. 12 mm)
Number of studs:	ca. 111 /sq. ft.	(ca. 1200 /m <sup>2</sup> )
Weight:	ca. 3.9 lbs/sq. ft.	(ca. 19 kg/m <sup>2</sup> )
Compressive strength at 10% compression:	ca. 4.1 ton/sq. ft.	(ca. 40 t/m <sup>2</sup> )
Shore-strength:	ca. 75 Shore A	
Modulus of subgrade reaction:	ca. 1030 pci	(ca. 285 MN/m <sup>3</sup> )
Heat resistance:	up to 428° F	(up to 220° C)
Briefly:	ca. 482° F	(ca. 250° C)
In-plane Water Flow Rate:		
- roof slope 1 %:	ca. 1.6 gpm/ft.	(ca. 0.34 l/(s·m))
- roof slope 2 %:	ca. 2.3 gpm/ft.	(ca. 0.47 l/(s·m))
- roof slope 3 %:	ca. 2.8 gpm/ft.	(ca. 0.57 l/(s·m))
Dimensions:	ca. 3.3 ft. x 3.3 ft.	(ca. 1.00 m x 1.00 m)

Project-specific solutions for driveways pavings upon request.

### Features

- extremely high mechanical loadability
- step joint edging
- heavy duty protection layer
- drainage effect
- "spade resistant"
- reduces subsonic noise
- high stability even during storms
- quick and easy installation

### Installation Instructions

Install the Heavy Duty Drainage and Protection Mat Elastodrain® EL 202 on the slip sheet or waterproofing with the studs facing up. Cut the drainage element in situ at roof penetrations. Elastodrain®

EL 202 is, included, but not limited to, to be installed according to manufacturer's instructions, not exposed to UV-light, completely covered. Call manufacturer for further options.

### Health and Safety

This product does not require a material safety data sheet (MSDS) according to the OSHA Hazard Communication Standard (29 CFR 1910.1200). When used as recommended or under ordinary

conditions, it should not present a health and safety hazard. However, an MSDS can be provided as a courtesy in response to a customer request.

