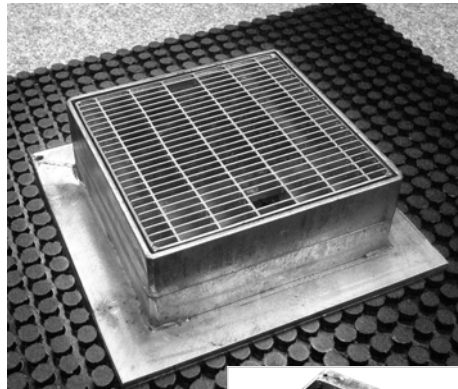
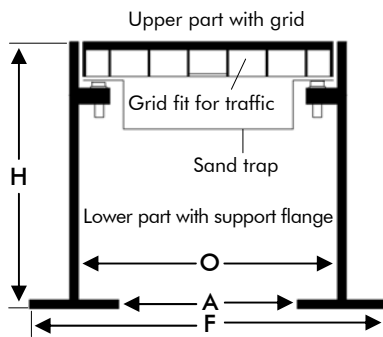


Product Data Sheet

Inspection Chamber BES



Heavy duty inspection and drainage chamber especially for the use on Elastodrain® EL 202.



Technical Data

EDP No. 4820 / 4830

Inspection Chamber BES

Made of galvanized steel with removable, secured grill, sand trap and pressure distributing support flange. Vertically adjustable to the respective layer height by extension pieces.

Outer dimension of the Chamber:	ca. 11.8 x 11.8 in.	(ca. 300 x 300 mm)	(O)
Flange:	ca. 15.8 x 15.8 in.	(ca. 400 x 400 mm)	(F)
Aperture dimension:	ca. 7.9 x 7.9 in.	(ca. 200 x 200 mm)	(A)
Support area:	ca. 1.3 sq. ft.	(ca. 0.12 m ²)	
Mesh width:	ca. 0.4 x 1.6 in.	(ca. 11 x 41 mm)	

BES 200 / EDP No. 4820

Height:	ca. 7.9 in.	(ca. 200 mm)	(H)
Weight:	ca. 70.5 lbs	(ca. 32.0 kg)	

BES 300 / EDP No. 4830

Height:	ca. 11.8 in.	(ca. 300 mm)	(H)
Weight:	ca. 86.0 lbs	(ca. 39.0 kg)	

Accessories:

BES Extension Piece / EDP No. 4825

Height:	ca. 1.0 in.	(ca. 25 mm)
Weight:	ca. 17.6 lbs	(ca. 8.0 kg)

Features

- fit for heavy traffic (up to 30 t)
- drainage is possible on the surface cover as well as in the drainage layer
- vertically adjustable to different heights in 1.0 in. segments
- extremely stable
- other dimensions, resp. other material possible upon request

Installation Instructions

Install the Inspection Chamber BES 200 / 300 on the Elastodrain® EL 202 drainage board above the drain. Install

the filter sheet on top of the flange of the inspection chamber.

Health and Safety

This product does not require a material safety data sheet (MSDS) according to the OSHA Hazard Communication Standard (29 CFR 1910.1200). When used as recommended or under ordinary

conditions, it should not present a health and safety hazard. However, an MSDS can be provided as a courtesy in response to a customer request.