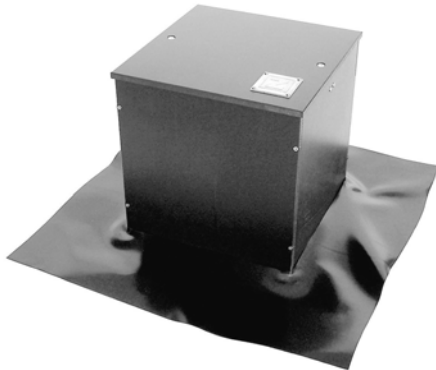


# Product Data Sheet

## Inspection Chamber KS 30-PE



Inspection chambers to secure the inspection of roof outlets or other components within intensive green roof systems.



### Technical Data

EDP No. 4033

#### Inspection Chamber KS 30-PE

Made of 100 % polyethylene, UV resistant, with solid, lockable cover and load distributing plates.

Height:	ca. 11.8 in.	(ca. 300 mm)
Aperture:	ca. 11.8 x 11.8 in.	(ca. 300 x 300 mm)
Weight:	ca. 13.2 lbs	(ca. 6.0 kg)
Color:	black	

#### Accessories:

Extension Piece KS 30	EDP No. 4016	
Height:	ca. 5.9 in.	(ca. 150 mm)
Weight:	ca. 4.4 lbs	(ca. 2.0 kg)

### Features

- suitable for green roof system build-ups up to 11.8 in. in height
- elevation with additional extension pieces
- 100 % polyethylene
- with load-distributing support plates
- walkable
- solid, detachable cover, lockable
- with PE sheet collar for consistent filter sheet connection

### Installation Instructions

Install the Inspection Chamber KS 30-PE on the protection mat above the drain.

Install the filter sheet on top of the flange of the inspection chamber.

### Health and Safety

This product does not require a material safety data sheet (MSDS) according to the OSHA Hazard Communication Standard (29 CFR 1910.1200). When used as recommended or under ordinary

conditions, it should not present a health and safety hazard. However, an MSDS can be provided as a courtesy in response to a customer request.