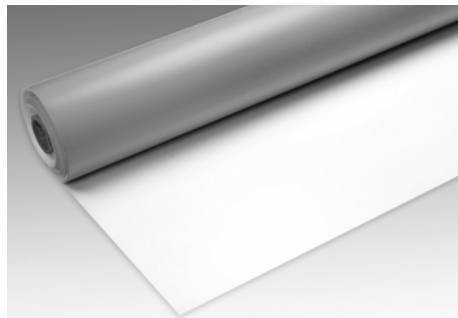
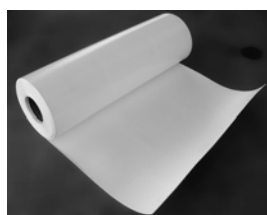


Product Data Sheet

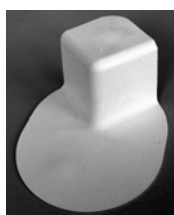
Root Barrier WSB 100-PO



FLL tested, hot air weldable sheet, applicable as root protection on extensive and especially on intensive green roofs.



Width ca. 2.0 ft. (ca. 0.60 m)



combined inside/outside molded corner

Technical Data

EDP No. 1084 / 21108400

Root Barrier WSB 100-PO

Resistant to bitumen, flexible at low temperatures and excellent weldable sheet made of flexible polyolefin (FPO), with polyester weft-inserted reinforcement, root proof according to the German FLL method of 2002.

Thickness: ca. 0.04 in. (ca. 1.1 mm)
Weight: ca. 0.23 lbs/sq. ft. (ca. 1.1 kg/m²)

Breaking strength
 (ASTM D751, Grab method): ca. 337 lbf (ca. 1.500 N)

Tensile strength
 (ASTM D751, Grab method): > 20 %

Water vapour permeability of air layer thickness: s_d = 280 m

Dimensions:
 EDP No. 1084 ca. 8.0 ft. x 100.0 ft. (ca. 2.44 m x 30.50 m)
 EDP No. 21108400 ca. 10.0 ft. x 100.0 ft. (ca. 3.00 m x 30.50 m)

Accessories:

EDP No. 1192 (inside/outside corner):
 EDP No. 1195 (Unsupported flashing):
 - roll size ca. 2.0 ft. x 49.2 ft. (ca. 0.60 m x 15.00 m)
 - weight per roll ca. 20 lbs (ca. 9 kg)

Features

- guaranteed root proof and rhizome proof against couch grasses according to the German FLL method 2002
- not resistant to bamboo
- bitumen resistant and for short periods of time oil-resistant
- resistant to microorganisms
- excellent cold flexibility
- hot air weldable
- superb weather-proofness
- recyclable

Installation Instructions

Install the Root Barrier WSB 100-PO above the non root resistant waterproofing, the seams are to be hot air welded root proof and water proof with an overlap of at least 2 inch. The root barrier has to be taken above the Growing Media along edges and at roof penetrations. Cut the root barrier

in situ at roof penetrations. Consider an allowance for overlap and wastage of ca. 3–5 %. Root Barrier WSB 100-PO is, included, but not limited to, to be installed according to manufacturer's instructions, not exposed to UV-light, completely covered. Call manufacturer for further options.

Health and Safety

This product does not require a material safety data sheet (MSDS) according to the OSHA Hazard Communication Standard (29 CFR 1910.1200). When used as recommended or under ordinary

conditions, it should not present a health and safety hazard. However, an MSDS can be provided as a courtesy in response to a customer request.

