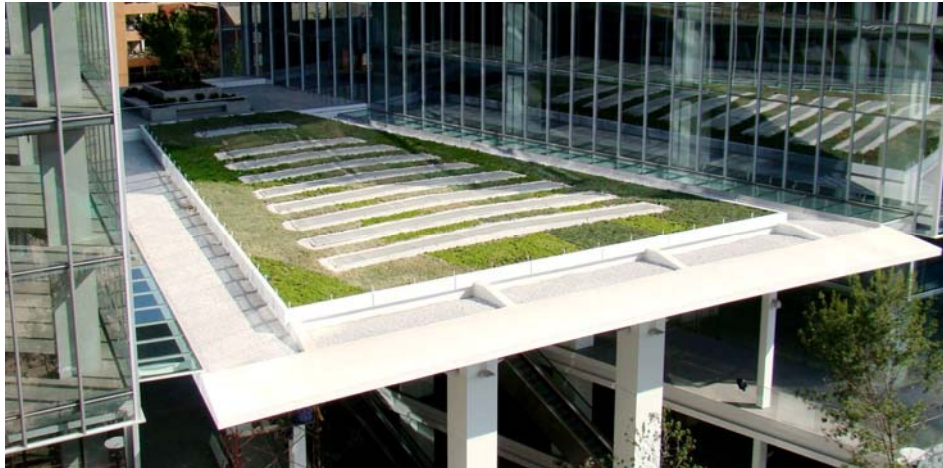




Project Profile Data

Office Building NLC 6+8, Santiago de Chile, Chile



The roof area including numerous skylights less than two years after completion.

Project Data

Area: 3,500 sq. ft. (320 m²)

Construction Year: 2010

Client:
Echeverria Izquierdo;
Ingeniería y Construcción SA.

Architect:
Luis Corvalan and A4 Architects

Contractor:
Hábitat Sustentable Ltda.

Coordinates:
33°24'18.78"S 70°34'26.74"W

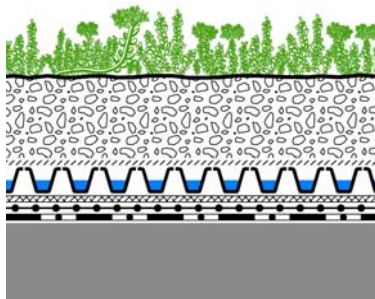
Conception

The office building designed by Luis Corvalan and A4 Architects has 23 floors and is the first and only project of this scale as part of the urban renewal of Santiago de Chile. Special emphasis in the design of the new district "Nueva las Condes" was given to its integration into the environment. The buildings form a large place, called "La Plaza de la Palabra".

This "Place of the Word" again forms the central point of the "Gran Boulevard Peatonal", a large pedestrian zone, which extends between the other buildings under construction.

The generously ornamentally designed green roof is located on a lower connecting building and is therefore clearly visible from the office towers.

System Build-up



- Plant layer
- Growing media Zincoblend
- Filter Sheet SF
- Floradrain® FD 25-E
- Protection Mat SSM 45
- Root Barrier WSF 40
- Roof construction with waterproofing



The first building of the new district "Nueva Las Condes" in Santiago de Chile provided with a green roof.

Development



The irrigation pipes were installed above the filter sheet, the entire surface beneath is covered with Floradrain® elements.



The growing media and the gravel (for the edges) are distributed evenly all over the roof surface.



The plants are applied according to the design plan.

